



ND TESOL Conference

Office of Refugee Services | November 18, 2024

NORTH
Dakota | Health & Human Services
Be Legendary.

slido

Please download and install the Slido app on all computers you use



Why have you chosen to focus on Teaching English as a Second Language?

① Start presenting to display the poll results on this slide.



Welcome to North Dakota

North Dakota's Immigration History

- ND Population 1890: 190,983
- ND Population 1920: 646,872

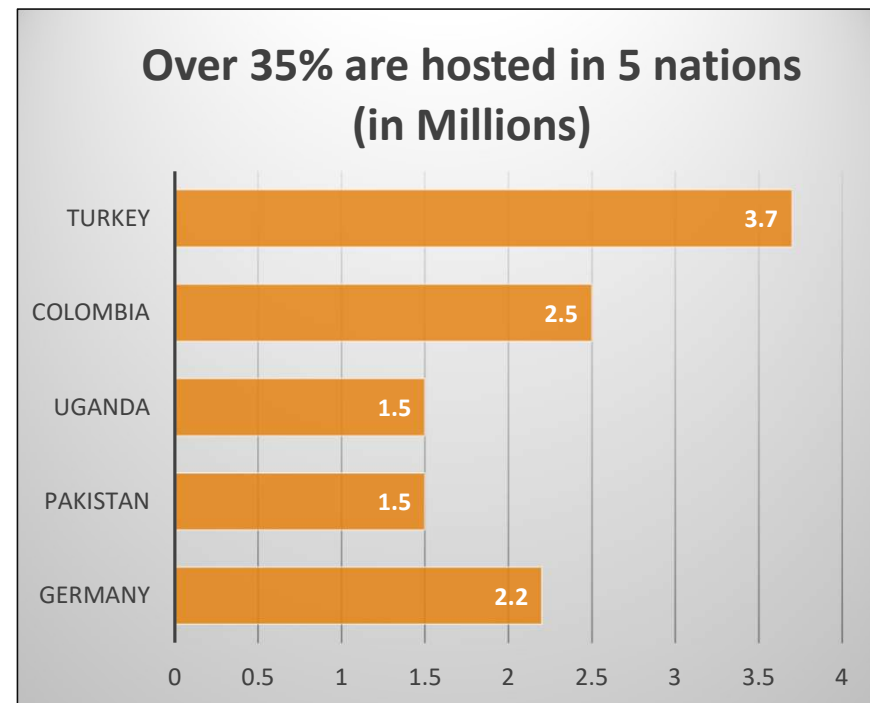
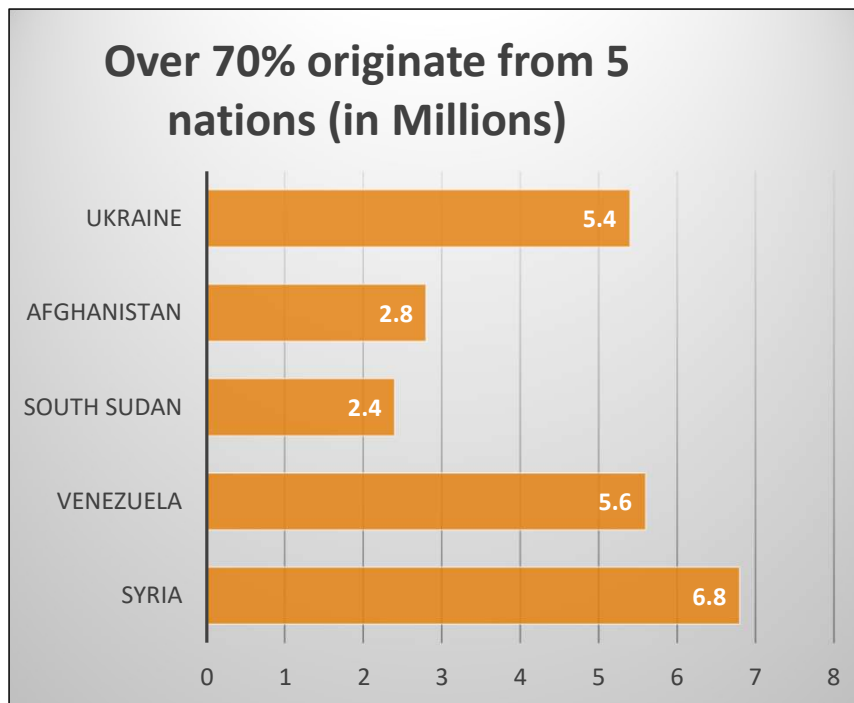
By 1920, 80% of all North Dakotans were immigrants or the children of immigrants.



Today 38,000 immigrants live in North Dakota
Comprising **4.4% of the population** but **6.2% of the workforce**
Representing a 176% increase since 2010

32.5 Million Refugees

Refugee: A person forced to flee their home country to escape persecution, war, or violence.



Source: [UNHCR Global Trends](#)

Waiting for a Durable Solution:

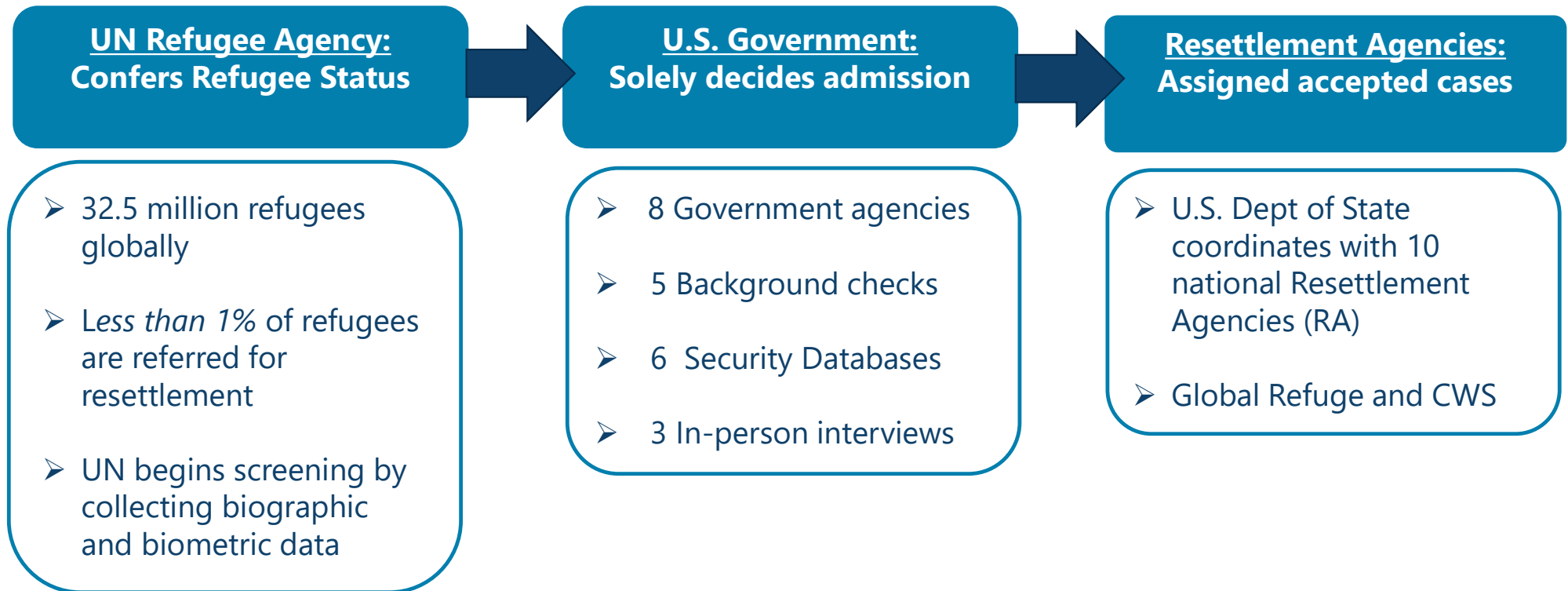
1) Voluntary Repatriation

2) Integration into the country of first asylum

3) Resettlement to a third country



How does a Refugee arrive in North Dakota?

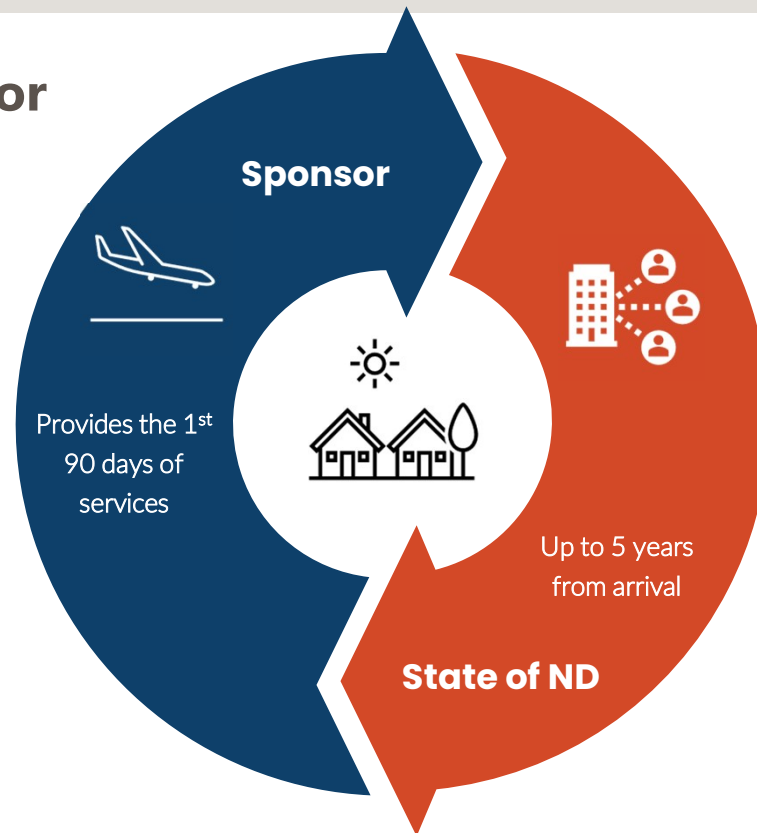


Refugee Arrivals and Service Provision

Resettlement Agency or Private Sponsor

Initial Services:

- *Airport Pick-up*
- *Housing*
- *School Enrollment*



ND Office of Refugee Services

Long-term Services:

- *English Learning*
- *Employment Support*
- *Community Integration*

What supports are available locally?



English Language Learning

Adult Learning Centers

- In-person instruction
- Virtual Classes



New American Employment Program

ND Job Service

- Career navigation
- Training and education



Community Integration Services

City-based Coordinators

- Build belonging
- Remove local barriers

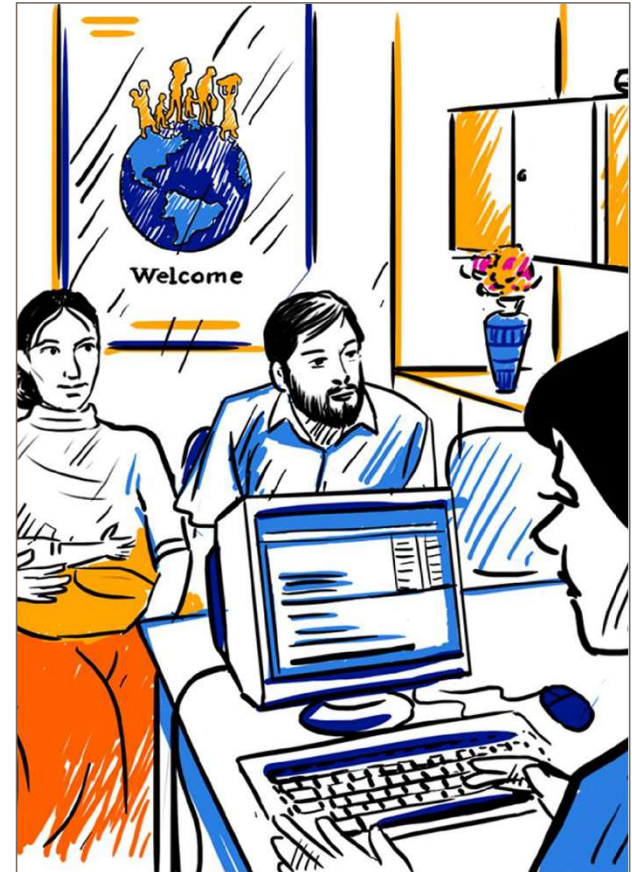
Resettlement Context for Newcomers

- Navigating new systems and culture
- Accessing resources and securing employment
- Language barriers
- Grief and loss
- Past and current trauma



Resettlement Context for Providers

- Critical resettlement timelines and deadlines
- Large, diverse caseloads (countries of origin, education, English levels)
- Limited resources
- Addressing immediate basic needs (housing, medical, employment)



slido

Please download and install the Slido app on all computers you use



What Challenges do to see preventing newcomers from focusing on education?

① Start presenting to display the poll results on this slide.

What does improved English proficiency mean in the life of a Refugee?

- Strengthened employment prospects
- Access to a wider range of job opportunities
- Increased earning potential
- Sharpened goal focus and planning
- Paths to professional development
- Active participation in the workforce
- Enhanced ability to navigate local systems and services
- Pathways to citizenship
- Greater civic engagement and voter participation
- Expanded opportunity for social interaction and relationship building

Impact of Education on Newcomers



- **Earning Difference:** Adults with low English proficiency (LEP) earn 25–40% less than those proficient in English
- **Job Skill Levels:** Highly skilled immigrants with LEP are twice as likely to work in “unskilled” jobs

What factors foster educational access?

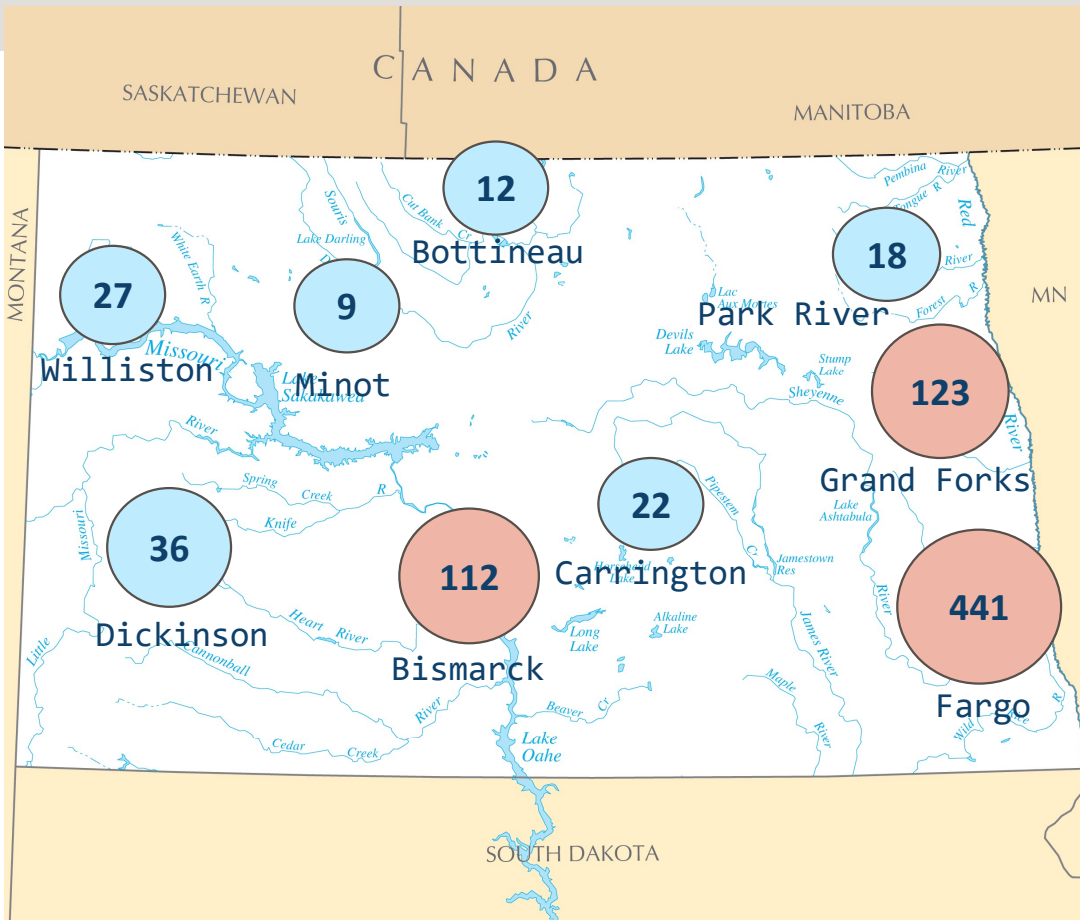
- **Strong relationships**
- Addressing **potential barriers**
- **Hands-on experiences**
- An **inclusive** and **welcoming atmosphere**
- **Clear information** and **guidance** on available resources



How can we empower educational access?

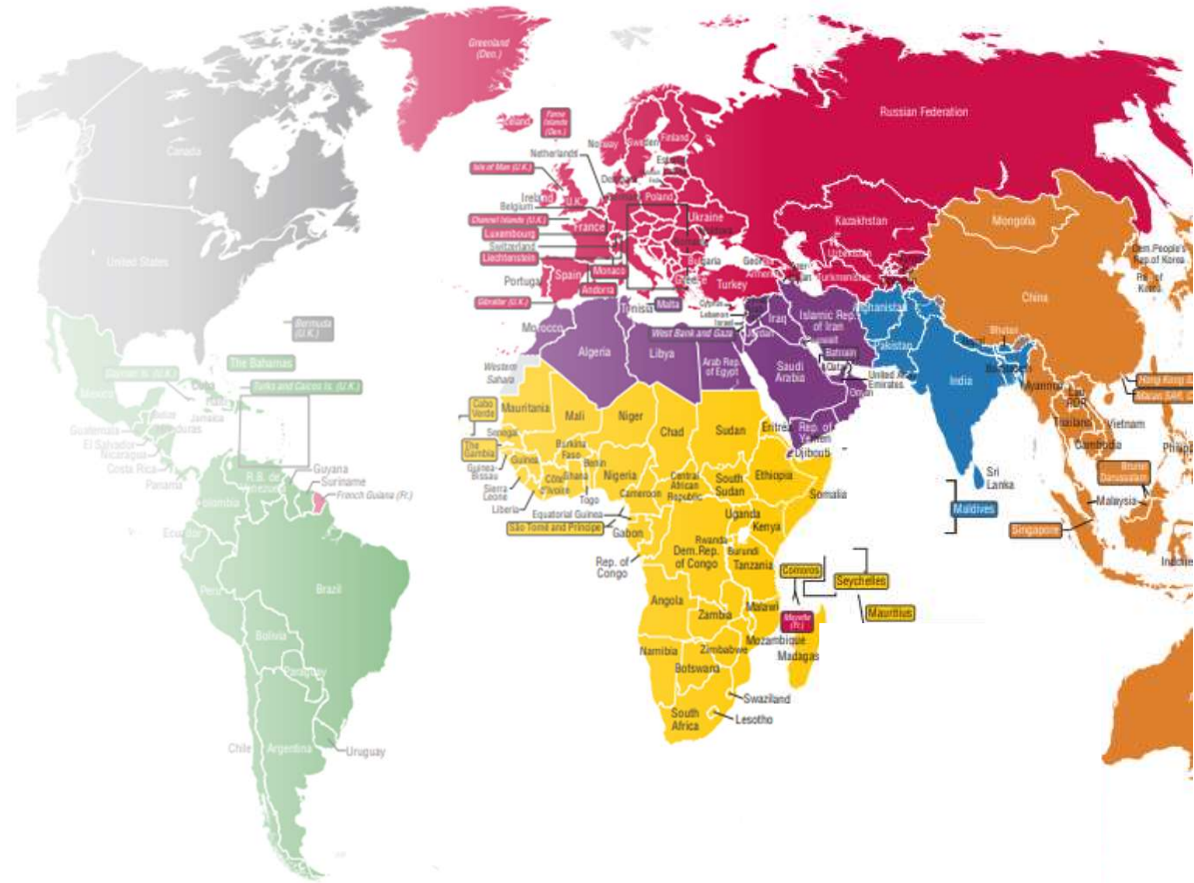
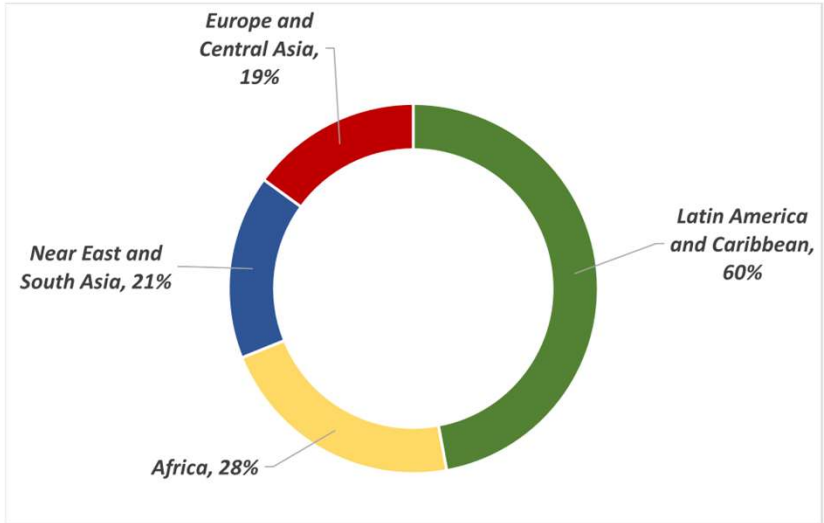
- Establish mentorship programs
- Coordinate field trips to educational institutions
- Arrange in-house meet-and-greet sessions for educational representatives
- Share success stories through clients' voices
- Facilitate goal articulation activities

Geographic Distribution of ND's Refugees



Total Resettlement in 2024: 804

Outside of Fargo: 45%



NORTH DAKOTA ARRIVALS BY WORLD REGION

2024 Employment Highlights



\$18.85

Avg. Hourly Wage of individuals starting a job in 2024



61%

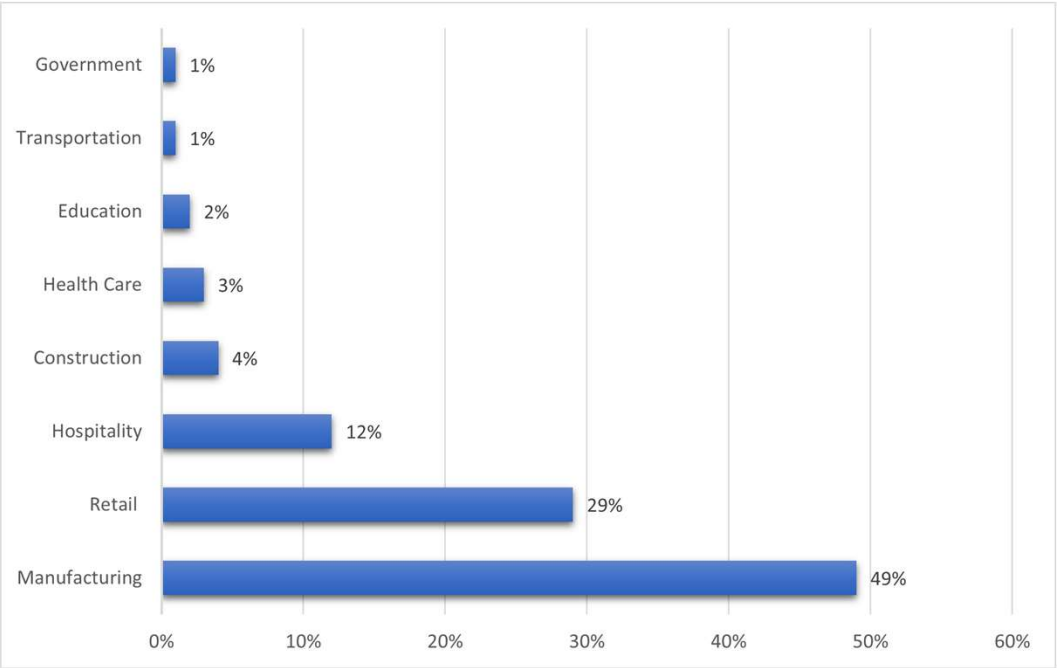
Percent of jobs paying more than \$18 per hour



\$32

Highest Hourly Wage

Top Sectors of Employment



Refugees are Economic Contributors

U.S. Census Data on 2.4M Refugees



Economic Engine

\$93.6B in household income
\$25B in taxes
\$68.6B disposable income



Income Growth

Median Household Income
> 20 years = \$71,400



Entrepreneurial Spirit

13% of refugees are
entrepreneurs, generating
\$5.1B in business income



Contact Information

Holly Triska-Dally
State Refugee Coordinator
701-328-4725, htriskadally@nd.gov

